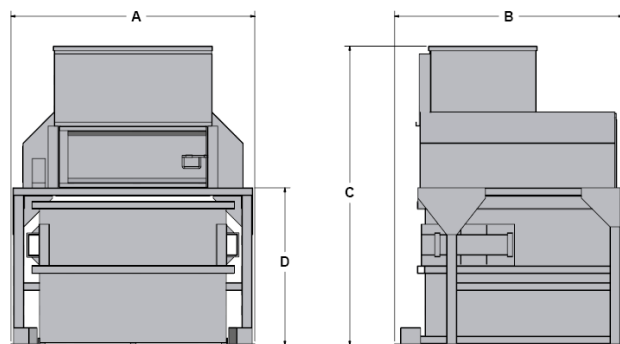


VP Series Stationary Vertical Compactors

Specifications

Manufacturer's Rated Size	1.8 Cubic yards	
Rated Size	1.1 Cubic Yards	
Cycle Time	59 Seconds	
Feed Opening (L x H)	56" x 23"	
Ram Dimensions (L x W)	60" x 40"	
Ram Penetration	14"	
Cylinder Bore, Rod & Stroke	(Twin) 4" x 2" x 36"	
Operating Pressure		
	Normal	1500 PSI
	Maximum	2000 PSI
Ram Force Rating		
	Normal	13.7 PSI / 32,870 Lbs
	Maximum	17.66 PSI / 42,386 Lbs
Motor (HP)	5 HP	
Pump (GPM)	7 GPM	
Tank Capacity	20 Gallons	
Shipping Weight	7,000 Lbs	

All Specifications are subject to change without notice.



Model	A	B	C	D	Capacity
VP-3	94"	88"	97"	45"	3 Yards
VP-4	94"	88"	97"	43"	4 Yards
VP-6	94"	88"	115"	61"	6 Yards
VP-8	94"	88"	133"	79"	8 Yards
VP-8LP	94"	103"	115"	61"	8 Yards

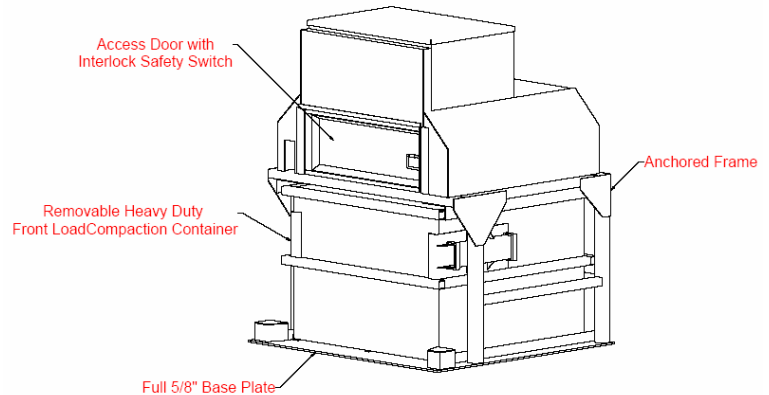


Illustration for reference only

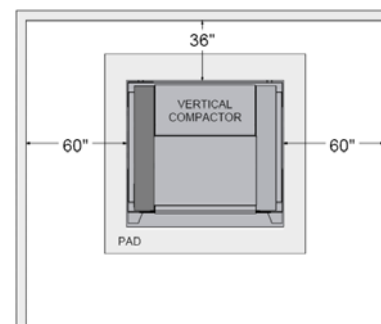
Installation Requirements

Minimum Recommended Requirements:

- Concrete Pad: 10' x 10' (May be made larger to suit) 4,000 PSI Reinforced, 6" Thick
- (6) 3/4" x 4 3/4" Anchor Bolts

Minimum Clearance Requirements:

- 36" From Back of Compactor to Wall
- 60" From Right, Left & Front of Compactor to Wall



Electrical Disconnect Requirements		
5 HP Motor		
Voltage	Amperage	Fuse
208	30	25
240	30	20
480	30	10

Available Options

- Platforms - Any Configuration
- Stairway & Hand Rail
- Side, Front, or Rear Load Configurations Available
- Customization Available



Distributor

385 Sumpter Road • Belleville • MI 48111-2932 • Phone (734) 699-5561 • Fax (734) 699-0360
 P.O. Box 68 • Belleville • MI 48112-0068
 On the Web at: <http://www.contractwelding.com>

02/07 REV2