

# WP-3 WetPak Stationary Horizontal Compactor

## Specifications

Manufacturer's Rated Size	3 Cubic Yards	
Rated Size	2.46 Cubic Yards	
Cycle Time	54 Seconds	
Capacity Per Hour	164 Yards	
Clear Top Opening (L x W)	52 1/2" x 62"	
Ram Face Dimensions (W x H)	59 3/4" x 24"	
Ram Penetration	24"	
Cylinder Bore, Rod & Stroke	6" x 4 1/2" x 92"	
Operating Pressure		
	Normal	1500 PSI
	Maximum	2000 PSI
Ram Force Rating		
	Normal	29.58 PSI / 42,412 Lbs
	Maximum	39.43 PSI / 56,549 Lbs
Motor (HP)	20 HP	
Pump (GPM)	18 GPM	
Tank Capacity	60 Gallons	
Shipping Weight	9,025 Lbs (approx)	
<b>Construction</b>		
<b>Frame</b>		
Floor - AR Plate	1/2"	
Floor Plate Supports	4" - 5.4 Lb Channel	
Side Plates	3/8"	
Side Reinforcements	6"x3"x1/4" Tube	
Breaker Bar	6"x 3" x 3/8" Tube	
Ram Hold Down Bars	1 1/4" x 1 1/4" Bar	
Load Binder Hook-Up	126,000 Lbs Capacity	
<b>Ram</b>		
Face Plate	3/4"	
Floor - AR Plate	1/2"	
Side Plates	3/4"	
Top Plate	3/8"	
Top Plate Reinforcement	4" - 5.4 Lb Channel	

All Specifications are subject to change without notice.

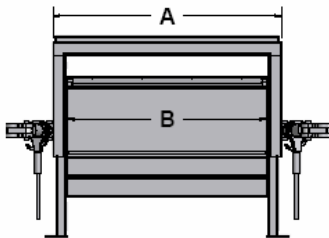
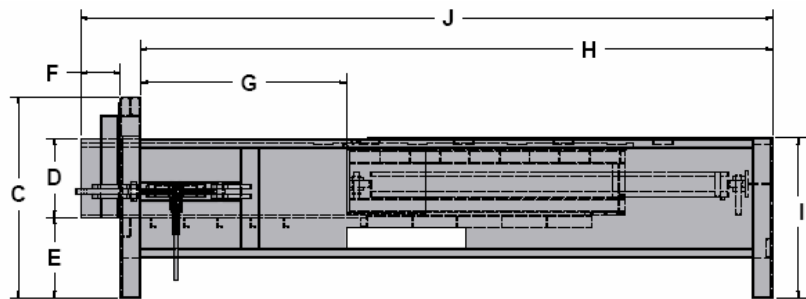


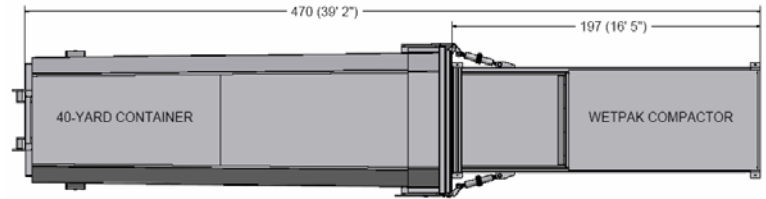
Illustration for reference only



<b>A</b>	<b>B</b>	<b>C</b>	<b>D</b>	<b>E</b>	<b>F</b>	<b>G</b>	<b>H</b>	<b>I</b>	<b>J</b>	<b>Capacity</b>
68 3/4"	60"	60 1/2"	23 3/4"	24 1/4"	12"	62"	190 1/2"	48"	208 1/2"	3 Yards



## Installation Requirements



### Minimum Recommended Requirements:

- Concrete Pad: 10' x 40' (May be made larger to suit)  
4,000 PSI Reinforced, 6" Thick

### Minimum Clearance Requirements:

- 12" From Back of Compactor to Wall
- 36" From Right & Left of Compactor to Wall

### Electrical Disconnect Requirements

20 HP Motor		
Voltage	Amperage	Fuse
208	100	80
240	100	70
480	60	40

### Available Options

- Hoppers & Enclosures - Any Configuration
- Through-Wall Chute & Door Framework
- Standard & Full Container Guides
- Pre-Crusher
- Compactor Access Systems
- Drive-on Ramp
- Cart Dumper
- Wheel Wear Plates
- Oil Heater

All Compactors can be Customized to Accommodate Any Clear Top Opening

Distributor

385 Sumpter Road • Belleville • MI 48111-2932 • Phone (734) 699-5561 • Fax (734) 699-0360  
 P.O. Box 68 • Belleville • MI 48112-0068  
 On the Web at: <http://www.contractwelding.com>

08/07 REV0